

**ENTHUSIASM OF THE COMMUNITY OF LAMSEUNONG LAMA
HALL, KAJHU VILLAGE IN THE EVENT COMMEMORATING
THE 18TH ANNIVERSARY OF THE TSUNAMI ON DECEMBER 26,
2004**

Sufyan ^{1*}, Tarmizi ¹, Maimun ¹, Riyan Maulana ¹, Muhammad
Yassir ², Rahmat Arfan ³, Dara Zulfinar ³, Adi Ahmad ¹

¹ STMIK Indonesia Banda Aceh

² Universitas Gunung Leuser

³ Kuta Raja Polytechnic

Email correspondence: sofyan.ars@gmail.com

ABSTRACT

Community Service (PKM) is one form of the tridharma of higher education through the service of lecturers and students to the community which is also a process of self-maturation by interacting directly with the wider community. Community Service (PKM) is also one of the efforts to realize a more efficient education, namely education that is directly experienced by lecturers and students, so lecturers and students do not only get material, but more importantly, the theories obtained in the lecture bench must also be applied in the field, especially in the community environment of Lamseunong Lama Hamlet, Kajhu Village, Baitussalam District, Aceh Besar Regency.

Keywords : Enthusiasm, Community, Lecturer service, Lamseunong Lama Hamlet

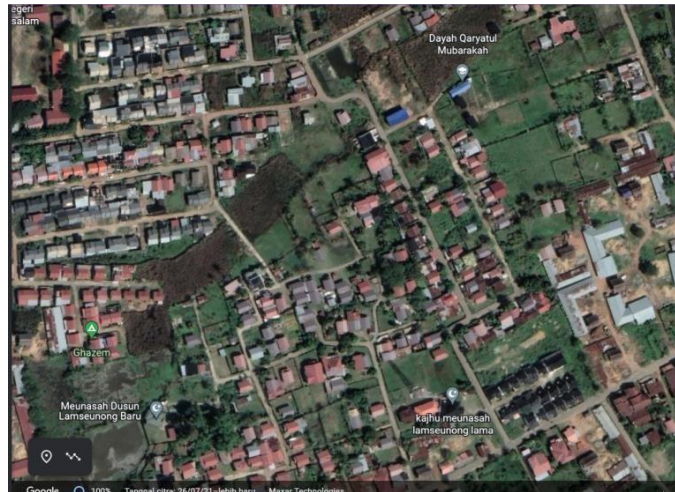
A. INTRODUCTION

Community Service (PKM) is a form of service between lecturers and students to the community and is also a process of self-maturation by interacting directly with the wider community of mothers, fathers, and also children. Community Service (PKM) is also an effort to realize a more efficient education, namely education that is directly experienced by lecturers and students, so lecturers and students do not only get material, but more importantly, the theories obtained in the lecture bench must also be applied in the field, especially in the community environment.

Furthermore, sometimes the theories we learn in college don't align with the realities of our communities. As Community Service (PKM) participants, we must adapt to these realities. We shouldn't just understand the theory; we should also be able to apply and learn from the experiences we gain in our communities. These experiences can broaden our thinking and mature our thinking.

Through this Community Service (PKM) program, it is hoped that students will be directly introduced to community life and all its problems. By discovering problems within ...

society, students are required to find solutions through the mechanism of their respective interdisciplinary scientific work systems. Through this Community Service (PKM) activity, it is hoped that it can also be used as a bridge for students to enter real life, namely after the students graduate from college. Based on these considerations, the Community Service (PKM) activity with the theme of the Enthusiasm of the Lamseunong Lama Hamlet Community, Kajhu Village in the Event to Commemorate the 18th Anniversary of the Tsunami on December 26, 2004 is considered very important and beneficial for the community to be held.



Lokasi Pengabdian Dusun Lamseunong Lama Desa Kajhu Kecamatan Baitussalam Aceh Besar Regency .

B. SERVICE METHOD

This Community Service Program (PKM) was conducted using qualitative methods in Lamseunong Lama Hamlet, Kajhu Village, Baitussalam District, Aceh Besar Regency. The program included lectures, training, guidance, and documentation for community participants, providing positive impacts for both the community and lecturers and students.

The target group for the work program is the community in Lamseunong Lama hamlet, Kajhu Village, Baitussalam District. The implementation is carried out through introductions, direct interaction, and direct practice on several aspects of the Community Service (PKM) program, including cleanliness practices , togetherness , and the location renewal program for the Real Work location. This aims to strengthen personalization and togetherness with the village community where this Community Service is located. The following is a description of the implementation methods used:

1. Socialization of Community Service (PKM)
2. At the location, the group members were welcomed by the hamlet head and other officials as well as the Lamseunong Lama hamlet community. The initial Community Service (PKM) activity was a sign of introduction to the community about the theme and material of Community Service (PKM) to all village officials, community leaders of Lamseunong Lama, Khaju Village, Baitussalam District, Aceh Besar Regency.
3. Direct interaction

The next stage is the process of direct interaction with the community and mutual interaction with all communities. This interaction process usually involves introduction to the implementers and campus institutions, introduction to the programs that will be implemented and to the program activities that will be carried out at the Community Service (PKM) location.

C. RESULTS AND DISCUSSION

During the Community Service (PKM) period, all group members and the surrounding community always work together and help each other in all daily activities and in all activity programs carried out by Community Service (PKM) participants. The first week of activities only focused on environmental cleanliness and in conjunction with helping in the renovation process of the Lamseunong Lama hamlet meunasah, due to the many activities that had to be done during the Community Service (PKM) process, we took the initiative after the afternoon and evening breaks to continue activities in maintaining the cleanliness of the environment inside and outside the Lamseunong Lama hamlet meunasah. Overall, all activities went well and smoothly, there were only minor obstacles in the facilities/tools in carrying out activities which were then facilitated by the hamlet community.

In the second week, activities were carried out on socialization of introduction and friendship with the Lamseunong Lama hamlet community, due to the more crowded environmental factors with children being supporters in activities and they also participated in playing during Community Service (PKM) activities. In this week, all group members also carried out other supporting activities such as creating activities for children, and helping local MSMEs such as by helping and visiting brick makers and visiting furniture places owned by local residents. In this second week, the movement of post members was also relatively more active, such as attending religious studies which are a regular agenda of hamlet residents and such as by attending community social activities such as visiting and condolence to residents' places. This week, social activities were also carried out to renew environmental facilities in the Lamseunong Lama meunasah to make it seem more active and able to initiate and convince of programs that will be implemented in the future.

The process in the third week only involved activities around the Community Service (PKM) post because in this third week the entire community of Lamseunong Lama hamlet and all members were preparing for a sacred event that is always held every year, namely the event to commemorate the Tsunami on December 24, 2004, which this year was the 18th anniversary. The preparations in question included preparing food for the event, cleaning the location of the event and preparing all the needs during the pre-event and when the event began. At the end of this week the post members also coordinated with several residents about the next program regarding the creation of cleanliness education boards and the creation of road signs.

In the last week, namely the fourth week during the Community Service (PKM) activity, all members of the post worked together to make directions and road signs and made sketches of the framework for placing educational banners in several places. After sorting out the objects and targets of the program to be implemented, thanks to the help and cooperation of several hamlet residents, the renewal and cleanliness service program was completed smoothly and in accordance with the targets that had been set. At the end of this week, we also had the opportunity to participate in social activities held at Dayah Qaryatul Mubarakah in preparation for the maulid event and to complete the final program during the Real Work Lecture activity, namely greening activities which will take place in the courtyard of the Al-Maghfirah Habib Chiek Kajhu Mosque, Baitussalam District, Aceh Besar Regency.

The following is the Community Service (PKM) agenda themed

The Enthusiasm of the Lamseunong Lama Hamlet Community , Kajhu Village, in the Event to Commemorate the 18th Anniversary of the Tsunami on December 26, 2004 in Lamseunong Lama Hamlet, Khaju Village, Baitussalam District, Aceh Besar Regency:

No.	Activity Name	Jenis Program	Schedule of activities	Information
1.	Cleanliness of the Post	Cleanliness Program	The first week	Finished
2.	Toilet Painting and Wudhu Place	Facilities and Services Renewal Program	The first week until the Second Week	Finished
3.	Program Commemorating 18 Years of the Tsunami	Social Activity Program	The third week	Finished
4.	Manufacturing and Installation Direction and Road Signs	Renewal and Service Program	The fourth week	Finished
5.	Creating Disposal Education Rubbish	Cleanliness Program	The fourth week	Finished
6.	Tree Planting	Greening Program	The fourth week	Finished

D. CONCLUSION

Community Service (PKM) with a duration of 1 month is a form of devotion of lecturers and students. With this Community Service (PKM), it is hoped that lecturers and students can play a role and participate actively in the community because in society it is not only knowledge that needs to be applied but also how lecturers and students approach and can integrate with the community environment. All programs can be implemented well and smoothly although there are some obstacles, but these can be overcome. The Community Service (PKM) program activities are carried out in the morning, afternoon and evening, some are also carried out outside of these times. With the implementation of these Community Service (PKM) programs, it is hoped that they will benefit the community of Lamseunong Lama Hamlet.

The implementation of this program is inseparable from the cooperation between the community and the cooperation between lecturers and students who carry out Community Service (PKM) in Lamseunong Lama Hamlet. So that in the implementation of Community Service (PKM) Lecturers and students are required to be able to live in society and understand the reality of society by using the knowledge, attitudes and skills they have. The success of Community Service (PKM) programs will ultimately provide mutually beneficial benefits between lecturers, students and the community. The positive side for lecturers and students is increasing concern for the surrounding environment both in the community and broadening the horizon of thought and can train student activeness in community life and can build initiative and enthusiasm in the community both parents, young generations and children in developing themselves in the future .

E. ACKNOWLEDGMENTS

This article is one of the activities of the community service program, therefore, we would like to thank the Chairperson of STMIK Indonesia Banda Aceh in this regard.

This event is represented by the STMIK Indonesia community service institution for its financial support and facilities. We also thank the tutors who provided training, guidance, and mentoring to the community during this series of community service activities. We also thank our partners for providing the facilities and infrastructure necessary to ensure the smooth and successful implementation of this service.

F. BIBLIOGRAPHY

- Hasan Basri, H. A. Rusdiana, 2015. *Education&Management*, publisher *Pustak Setia*
- Lian, B, 2019. The Responsibility of the Tridharma of Higher Education to Respond to Community Needs. *Proceedings of the National Seminar on Postgraduate Education Programs at PGRI University of Palembang*, 2, 999–1015.
- Mohammad Mulyadi, 2011. *Community Participation in Village Community Development*, publisher *Nadi Pustaka*
- Prof. Dr. Suparno Eko Widodo., MM, 2017 *Training Management*, *Jaya Media Publisher*.
- Ramdani Wahyu, Sururie, 2016 *Concept and Implementation of Community Service at PTKIN*. *Institute for Research and Community Service (LPPM) UIN Sunan Kali Jaga*
- S. Notoadmojo, 1997. *Human Resource Development*, Jakarta: *Rineka Cipta*.
- Suprijanto, 2011. *Adult Education From Theory to Application*, Jakarta : *Bumi Aksara*.
- Sugiyono., 2012. *Understanding Qualitative Research*. *Bandung: Alfabet*.
- Soebagio Atmodiwiryo, 2002, *Training Management*, *Ardadizya Jaya Publisher*
- Zezen Zainul Ali, 2020. *Pocket Book on Community Service and Its Implementation: Ideas and Implementation of Community Service Through Direct and Indirect Community Service Activities*, *Publisher: Cv. Laduny Alifatama (Laduny Publisher)*